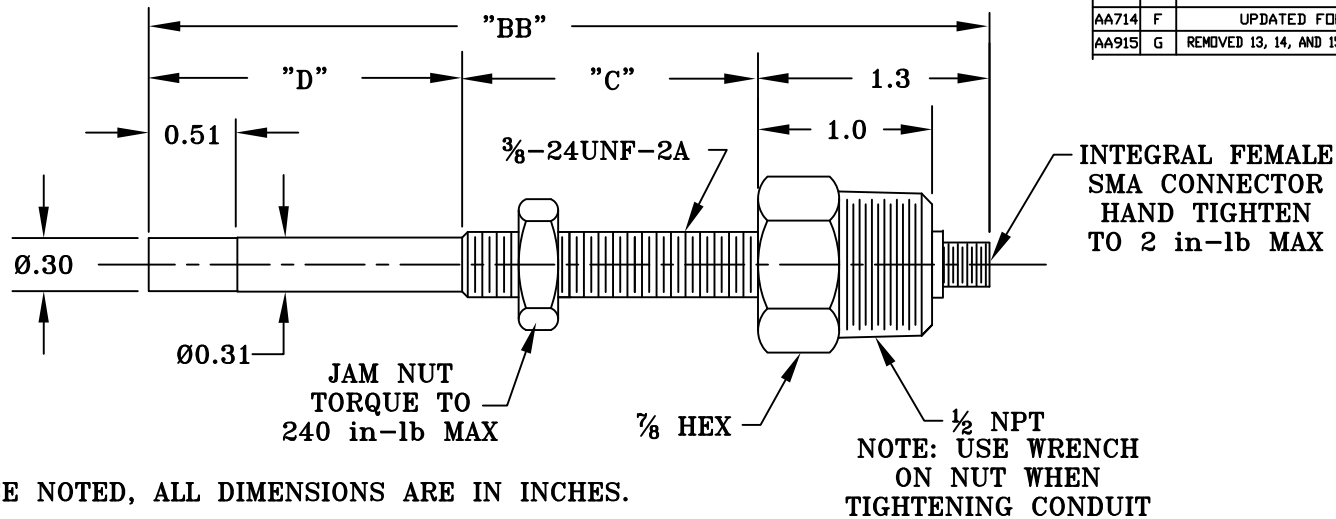


4

3

2

1



INTEGRAL FEMALE
SMA CONNECTOR
HAND TIGHTEN
TO 2 in-lb MAX

JAM NUT
TORQUE TO
240 in-lb MAX

$\frac{7}{8}$ HEX

$\frac{1}{2}$ NPT
NOTE: USE WRENCH
ON NUT WHEN
TIGHTENING CONDUIT

REVISIONS				
ECN	REV	DESCRIPTION	DATE	APPROVED
AA714	F	UPDATED FORMAT	03/03/10	NJK
AA915	G	REMOVED 13, 14, AND 15 FROM TABLE	03/21/11	JAS
				TTW
				ECN

UNLESS OTHERWISE NOTED, ALL DIMENSIONS ARE IN INCHES.

SPECIFICATIONS:

OPERATING TEMPERATURE RANGE:
-40° TO 300°F (-40° TO 149°C)

"GAP" RANGE: .015"-.095"

LINEAR RANGE: .080"

OPTIMUM TARGET SPECIFICATIONS:

SIZE: 1.25" DIAMETER MINIMUM.

MATERIAL: 4140/4340 STEEL OR

400/300 SS.

NOTE: FOR OPTIMUM PERFORMANCE,
KEEP PROBE TIP CLEAR OF ANY METALLIC
MATERIAL OTHER THAN THE TARGET.

FREQUENCY RESPONSE: 10KHz

NOTES:

① THIS PROBE IS PART OF A COMPLETE
MEASUREMENT SYSTEM THAT INCLUDES A
DRIVER OR TRANSMITTER AND A
CONNECTING CABLE.

② ASSEMBLY DWG.: 33867-XX

TYPE	"C"	"D"	"BB"
01	0.75	1.25	3.3
02	0.75	1.5	3.6
03	1.0	1.5	3.8
04	2.0	1.5	4.8
05	2.75	1.5	5.6
06	0.75	4.25	6.3
07	3.5	3.0	7.8
08	2.0	3.0	6.3
09	3.75	2.25	7.3
10	4.0	4.5	9.8
11	5.0	5.0	11.3
12	6.0	7.0	14.3

TYPICAL APPLICATIONS:

POSITION MEASUREMENT:

-THERMAL EXPANSION OF MACHINE CASINGS
AND ROTORS.

-THRUST BEARING WEAR.

VIBRATION MEASUREMENT:

-VIBRATION OF ROTARY SHAFTS.

SPEED MEASUREMENT

CONSULT FACTORY FOR SPECIAL OPERATING
CONDITIONS AND SPECIFICATION.

PROBE BODY MATERIAL: 300 SERIES SS

		Riverhawk Company 215 Clinton Road New Hartford, New York 13413	
DRAWN BY: LC BOGNI		DATE: 11/21/80	
ENG. APPROVAL: CHET		DATE: 11/21/80	
SCALE: NTS		TOP DRAWING	
SIZE: A		CAGE NO.: 3ZQD3	
DWG. NO.: AP-1290-LGXX		REV: G	
SHEET		SHEET	

THE INFORMATION CONTAINED IN THIS DOCUMENT IS PROPRIETARY TO RIVERHAWK COMPANY AND MAY NOT BE COPIED, USED FOR MANUFACTURE, USED FOR DESIGN OF OTHER COMPONENTS OR RELEASED TO ANY OTHER PARTY WITHOUT EXPRESS WRITTEN PERMISSION FROM RIVERHAWK COMPANY.

4

3

2

1